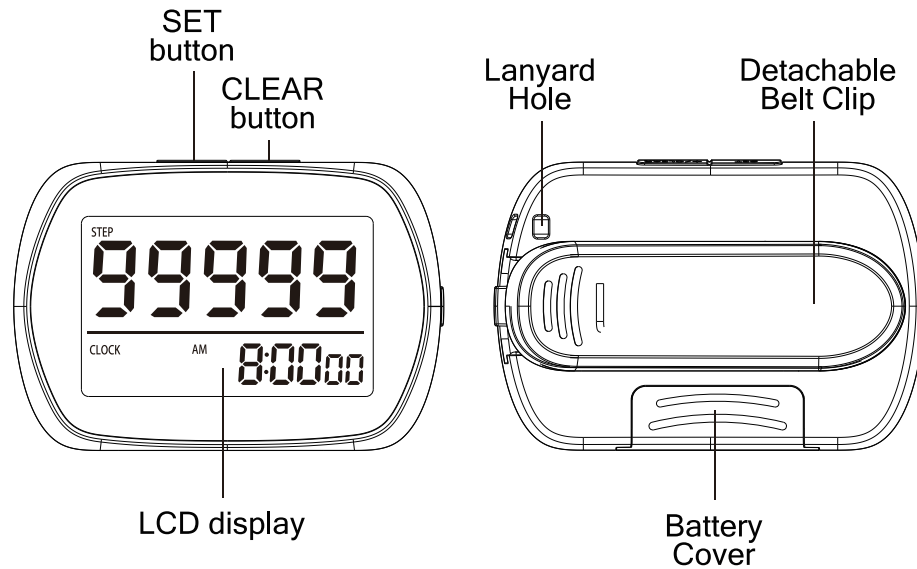


PEDOMETER USER MANUAL

The pedometer may not count steps correctly in the following conditions:

1. In the case of a quick stop and a quick walk.
2. In the case of irregular motion such as swinging and vibrating.
3. In the case of using with a walking aid, or taking slow or light steps.
4. In the case of riding on transport such as buses, trains & cars!!!



FEATURES

- 3D Silent Accelerometer Sensor
- Step count up to 99,999 Steps
- 12/24-hour clock
- Large CLEAR and SET button on the top for easy resetting
- 10 Steps False Start Error Correction
- Extra large LCD digits
- Detachable Clip
- Lanyard (neck strap)

GETTING STARTED/FIRST TIME USE

- remove the battery insulator sheet and Insert battery into battery compartment to activate the pedometer.
- If LCD is showing abnormal characters / the screen freezes/pedometer not counting ,please perform a 'SYSTEM RESET' by removing the battery and re-insert the battery back into the pedometer again.
- The LCD may show faint background digits. This is normal because of fresh battery. This will disappeared when the battery drops to its normal operating voltage.

STEP COUNT FUNCTION

The 3D Accelerometer sensor will detect movements as steps when attached to any parts of the body. It can also detect steps when carry inside your backpack or handbag. The step counter will begin once motion is detected.

10 STEPS ERROR CORRECTION

To eliminate accidental movements as steps, this pedometer will start counting steps after ten steps are detected.

CLOCK FUNCTION

The digital pedometer come with clock function, can be switched between 12 / 24 display mode.

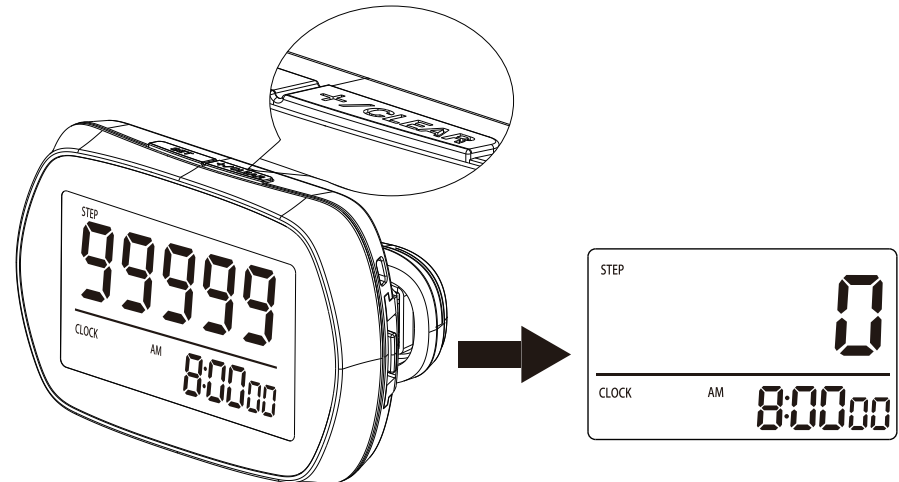
IMPROPER STEP COUNTING

The pedometer may not count steps correctly in the following conditions:

- Irregular motion such as swinging and vibrating.
- Inconsistent walking pace.
- Riding on transport such as buses, trains & cars.

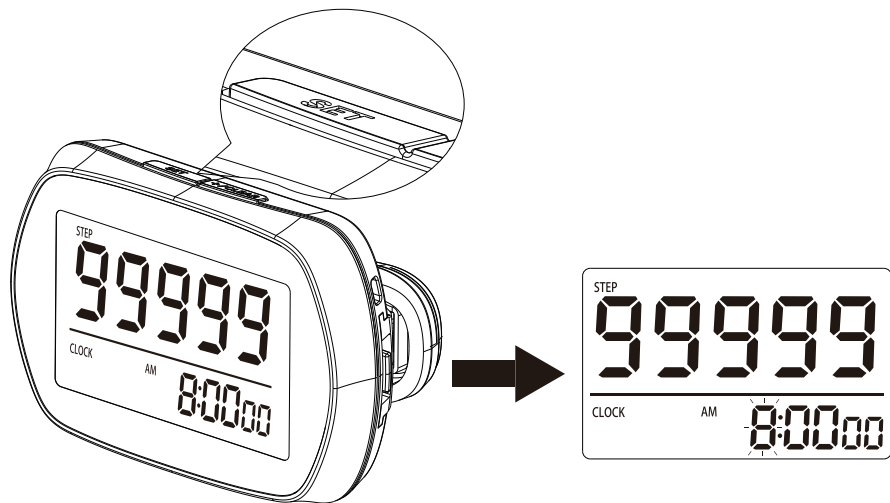
RESETTING THE STEP COUNTER

To reset the step counter digits to zero, simply press and hold the CLEAR button on the top of the screen until the display shows the digit '0'.



SETTING THE CLOCK

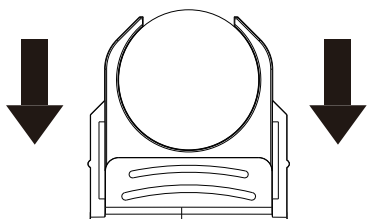
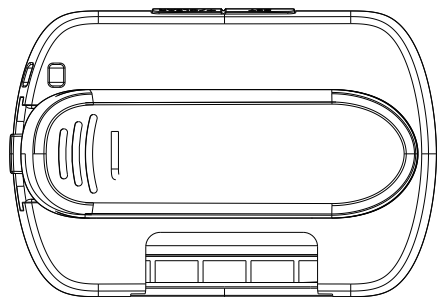
- Press and hold SET button, as the HOUR is flashing, press CLEAR button to adjust the value. Then press SET Button to switch to the MINUTE / SECOND, and press CLEAR button to adjust. After setting's done, press SET Button to save.
- 12hour mode displays AM/PM on the screen. To switch mode between(12 / 24), setting time to the last hour(12 PM in 12hour mode, 24 in 24hour mode) and press CLEAR button again.



WHEN THE LCD BECOMES DIM, REPLACE A NEW CR2032 BATTERY AT ONCE.

The pedometer uses 1 piece of CR-2032 button cell battery.

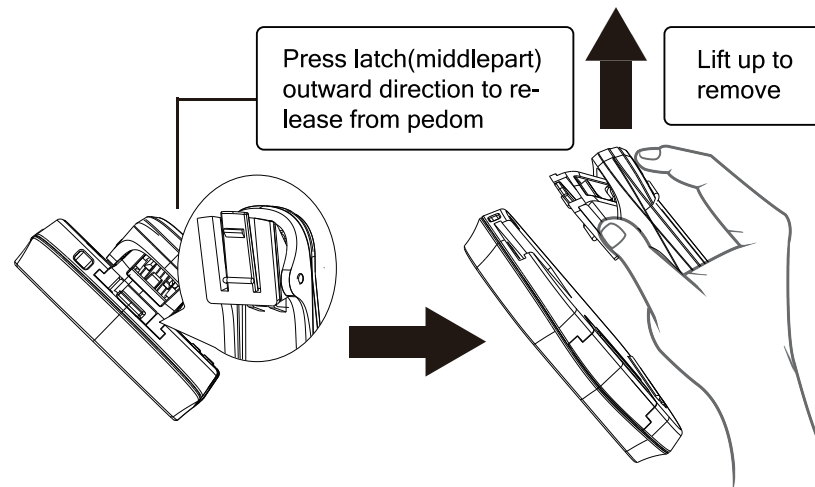
- Slide the battery cover outward using your thumb.



- Take out the old button cell battery.
- Replace with fresh battery. Make sure the battery is inserted in its correct polarity position.
- Slide the battery cover with the battery back into the unit.

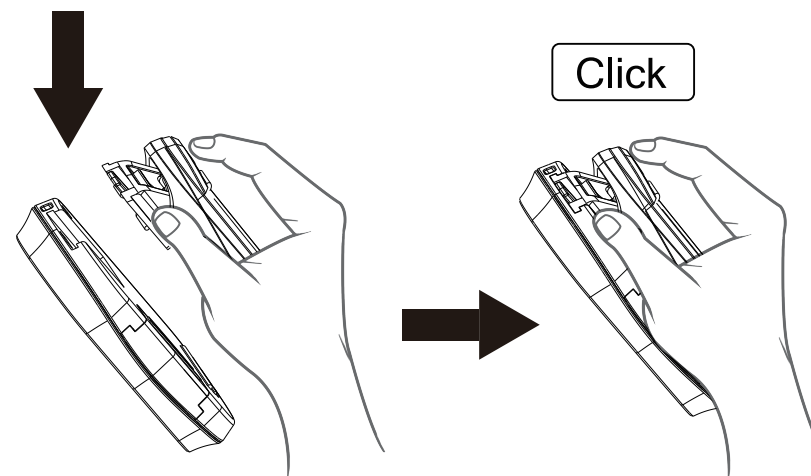
REMOVING THE CLIP

Press latch and lift up clip to release from the pedometer.



HOW TO INSTALL CLIP

To install the clip back on the unit by sliding the clip into the slot on the backside of the unit until a 'click' sound is heard.



SPECIFICATIONS

- Model: YS-003
- Battery: CR-2032 x 1 piece(included).
- Step Counter with Clock. step counter: up to 99,999 steps. clock: 12/24-hour display.

WARNING!

- **INGESTION HAZARD:**This product contains a button or coin cell battery
- **DEATH** or serious injury can occur if ingested
- A swallowed button or coin battery can cause Internal Chemical Burns in as little as 2 hours



Made In China